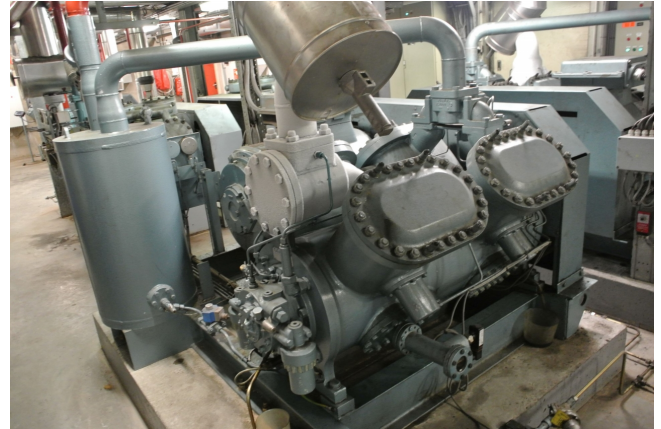


# Grasso 810

## Specifications

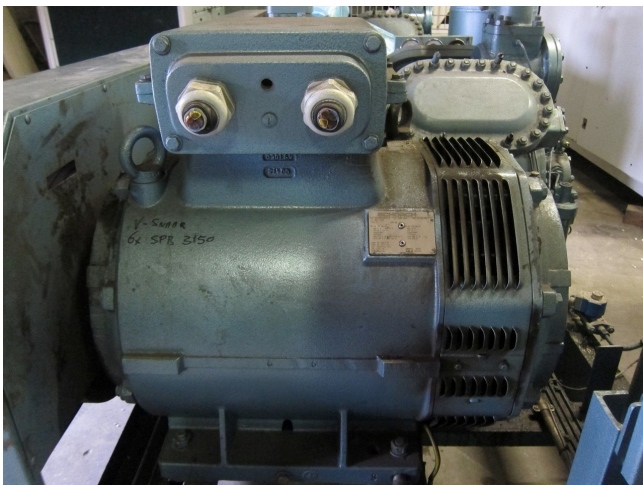
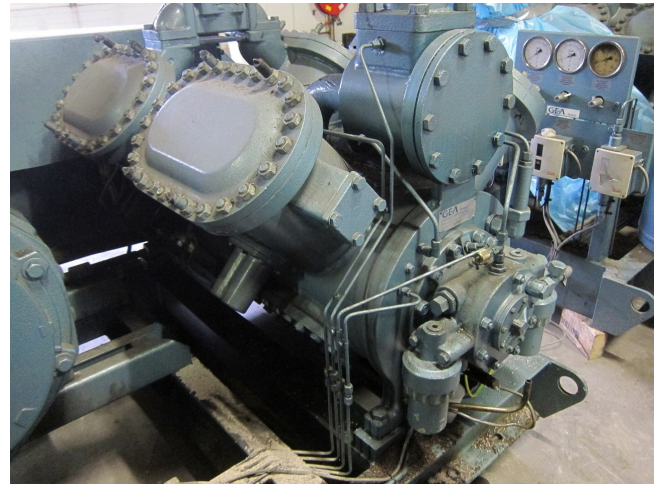
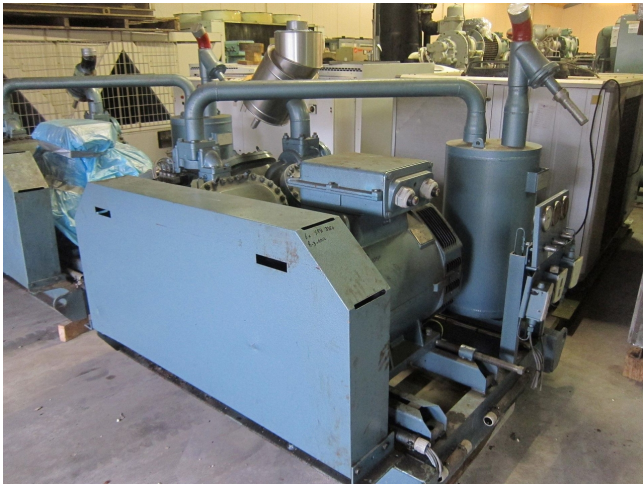
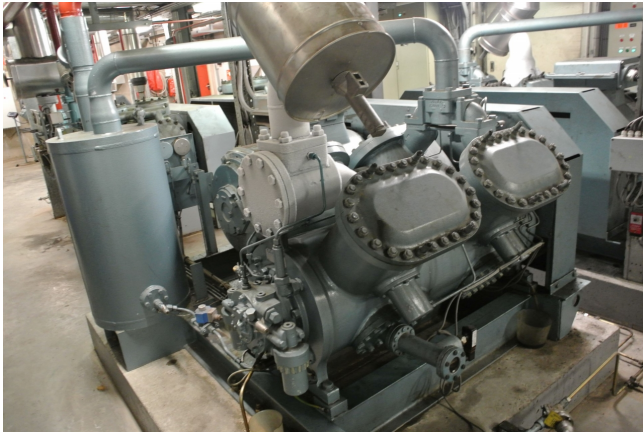
Hersteller	Grasso
Typ	810
Kältemittel	Freon
kW at 0°C/+40°C	446
E-Motor Specs	132
Anlaufentlastung	✓
Leistungsregelung	✓
Auf einem Stahlrahmen	✓
Druckschalter	✓
Druckmanometer	✓
Ölabscheider	✓
Bemerkungen	y.o.b. 2000 // Electromotor: 132 at 1475 RPM
Bemerkungen	R404a - R22 or other freon types
Package / Rack	✓
Größe	2000x1800x1700 mm (LxWxH)
Stock	1

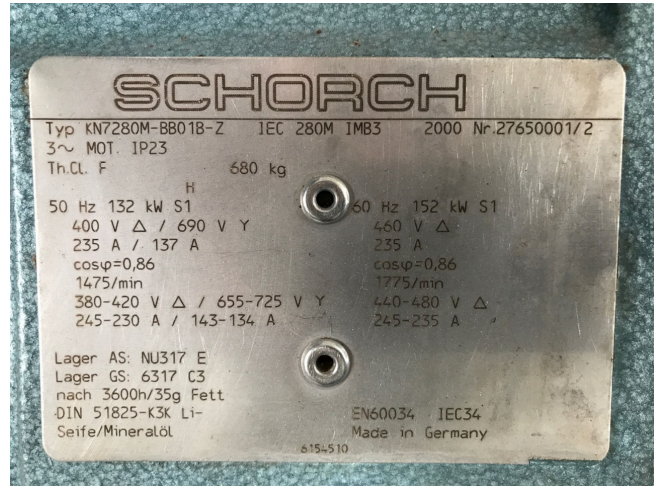


## Description

### Used Grasso 810

Gebrauchtes Grasso 810 Freon-Kompressorgestell, komplett mit unbelastetem Start, Leistungskontrolle, Drucksicherheitsschalter, Manometer und Ölabscheider. Dieses Gerät hat eine Kühlleistung von 446 kW bei 0 °C/+40 °C.





## GEA Grasso 10 series

A range of outstandingly reliable, open type, reciprocating refrigeration compressors. Central to their design is absolute reliability under the most demanding circumstances and with an alert eye to economics.

GEA has paid particular attention to such aspects as price, maintenance costs and power consumption. GEA has achieved this by incorporating innovations like composite material valves and lightweight pistons with low-wear piston rings into a design that has already proven itself in actual practice. Combined with our unique welded steel compressor concept, these innovative features enable us to offer you total reliability and maximum efficiency. The GEA Grasso 10 series is designed to work efficiently in almost any type of industrial refrigeration installation for cooling either freezing application.



### Features of GEA Grasso 10 series

- Steel welded compressor housing
- No water cooling required
- Extensive range of single & two stage models
- Capacity control steps per cylinder
- Suitable for speed control (600 - 1500 min.-1)
- Composite valve material for high efficiency and long valve life time

GEA Grasso 10 series					
Models	Swept Volume* (m³/h)	NH <sub>3</sub>	Cooling cap. (kW)**		
			R22 0/40 °C	R134a	R404A**** -15/+40 °C
Single stage					
GEA Grasso 210	145	119	111	61	49
GEA Grasso 310	217	178	167	92	73
GEA Grasso 410	290	238	223	124	99
GEA Grasso 610	435	357	334	185	147
GEA Grasso 810	580	476	446	247	198